

INSTALLATION INSTRUCTIONS

DESCRIPTION: Folding Windscreen Kit
 PART NUMBER: B8K-F83J0-V0
 MODEL: Wolverine X2/X4



WARNING

Please read and understand these instructions completely before installation to avoid possible injury, or damage to the accessory or vehicle.

WARRANTY INFORMATION:

Genuine Yamaha Accessories are covered by a one-year limited warranty against defects in material or workmanship. Labor for replacement of defective components is not covered. See your Yamaha dealer for a copy of the warranty statement.

NOTICE:

This installation requires a torque wrench and should be performed by an authorized Yamaha dealer or other qualified technician.

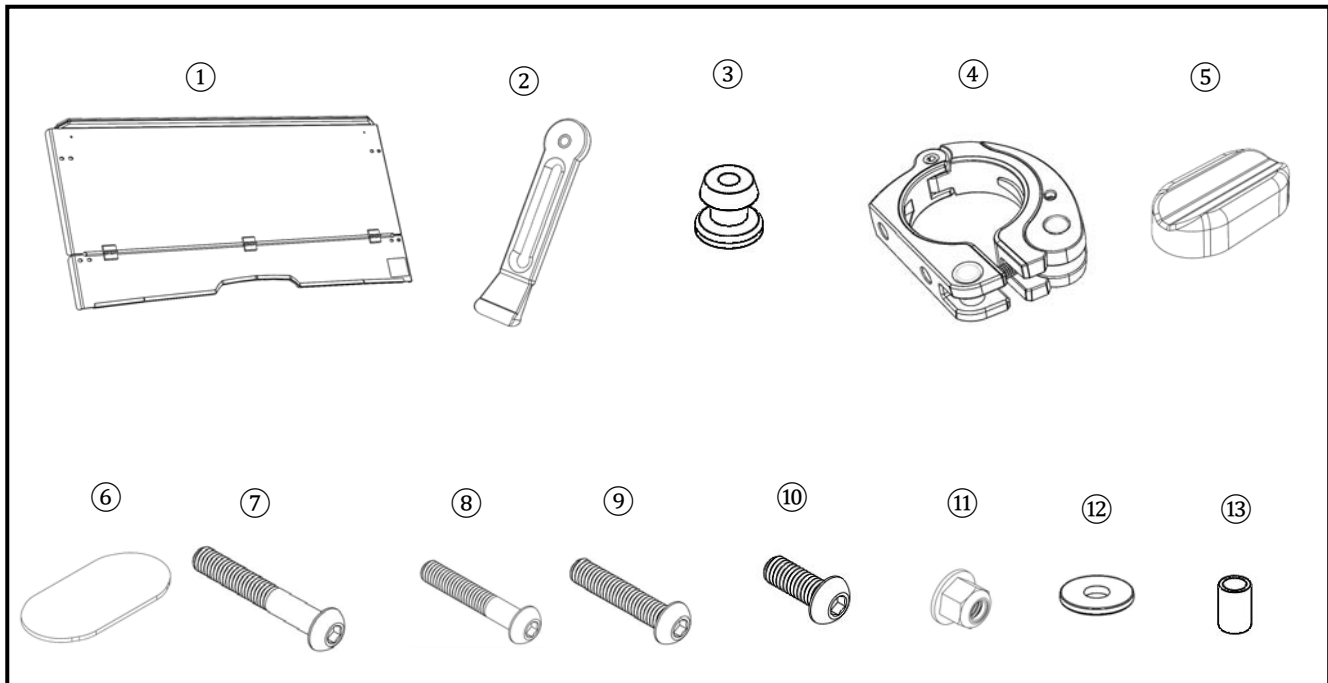
DEALER OR INSTALLER:

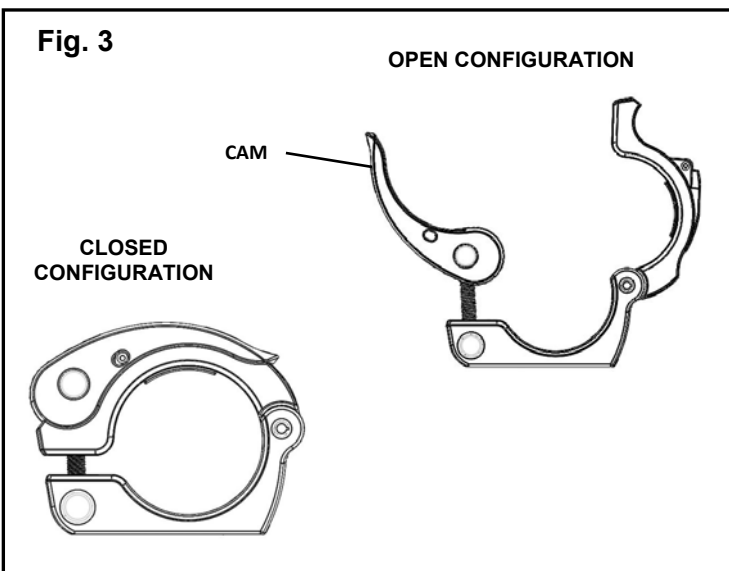
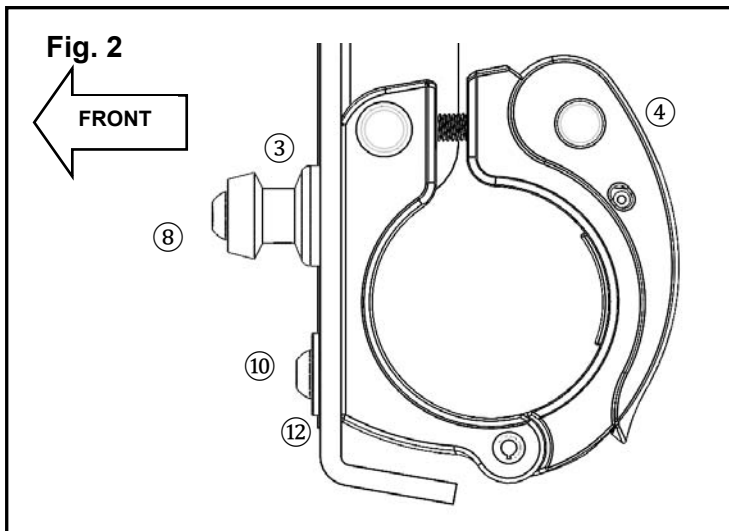
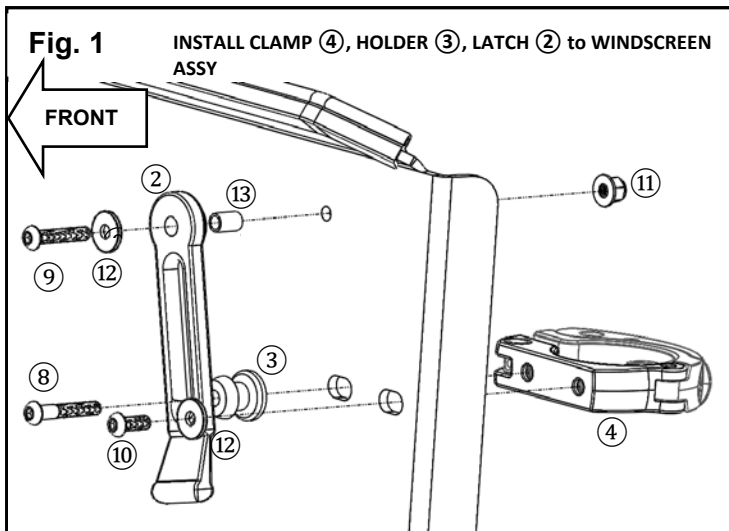
These instructions contain important information for future reference and *must* be given to the customer.

PARTS LIST:

No.	Part Number	Description	Qty
--	B8K-F83J0-V0	Folding Windscreen Kit	--
①	*	Wind Screen Assy	1
②	8V0-77171-00	Body, Latch	2
③	8M6-77175-00	Holder, Latch	4
④	BG4-F72C2-V0	Clamp, Cam	4
⑤	B5H-F8344-V0	Pad, Windscreen	2
⑥	B5H-K7529-V0	Pad, Adhesive	2
⑦	*	M6 x 40mm Button Head Screw	2
⑧	*	M6 x 35mm Button Head Screw	2
⑨	*	M6 x 30mm Button Head Screw	2
⑩	*	M6 x 16mm Button Head Screw;	6
⑪	*	M6 Nylon Lock Nut	4
⑫	*	M6 Washer	10
⑬	*	Collar	2

* Part supplied with kit only and not available separately.



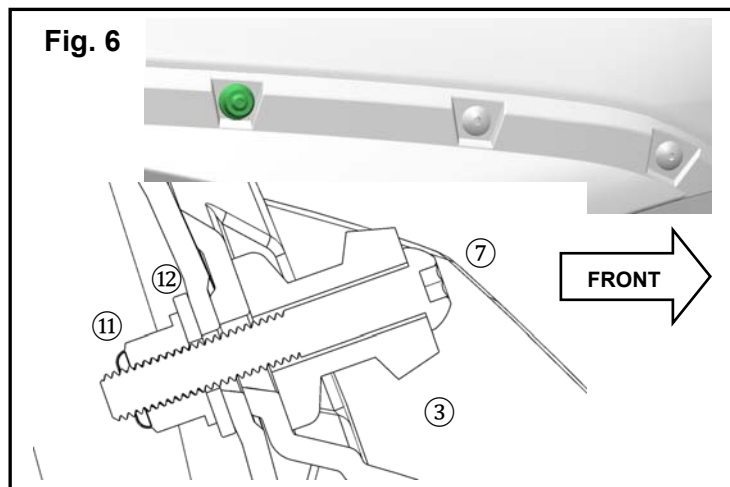
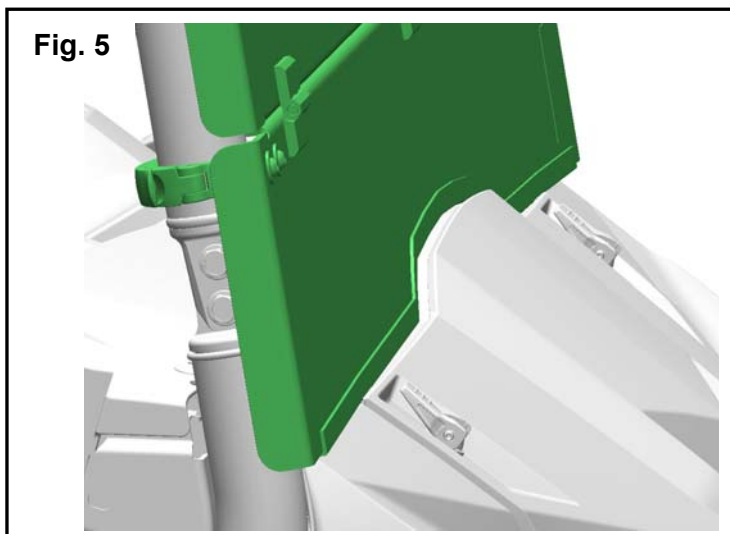
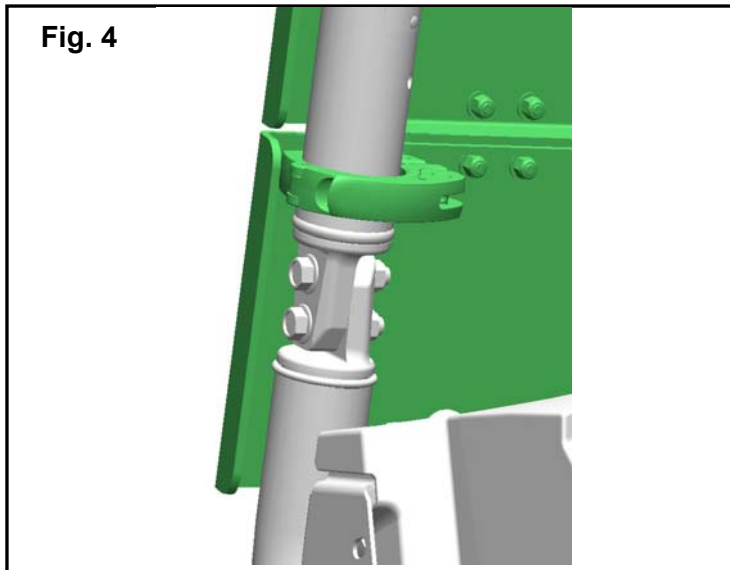


PREPARATION:

- Place the vehicle on a secure and level surface.
- Set the parking brake.
- Clean the mount surfaces before starting installation.

INSTALLATION:

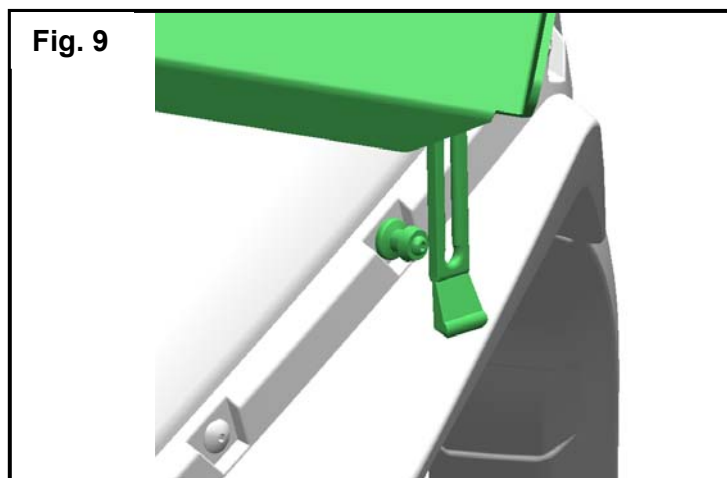
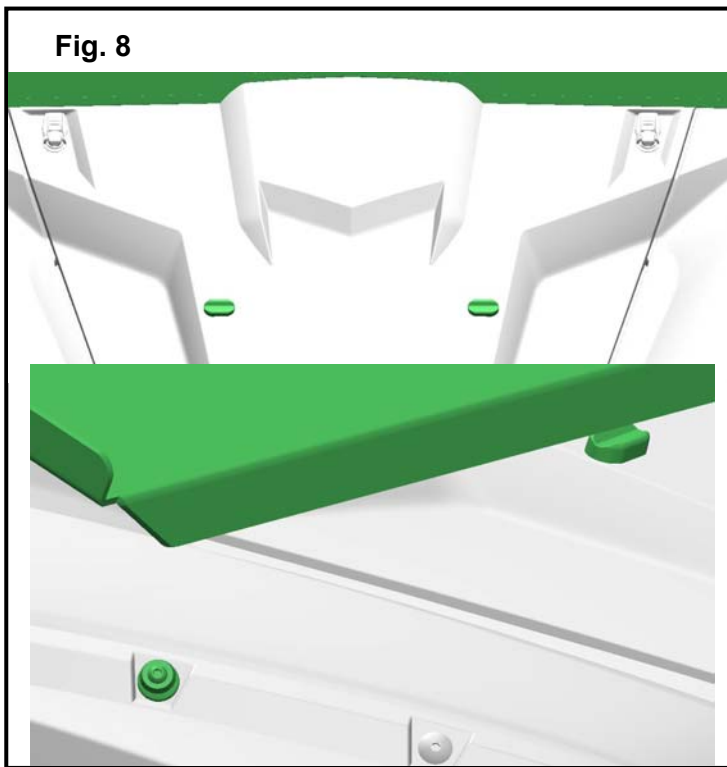
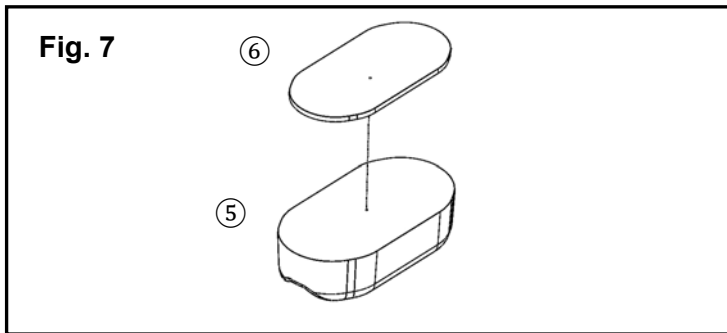
1. Protect the Windscreen (1) by placing a mat between the assembly and the work surface.
2. Ensure the seal is properly installed along the top & bottom edge of the windscreen with the bulb on the seal facing the same direction as the right angle folded edges of windscreen.
3. Begin assembly of the upper corners of the windscreen by pressing the collar (13) into the pre-existing rubber hole on the latch (2).
4. Install a washer (12) to each M6x30mm button head screw (9). Insert screw and washer through hole in collar (13) and then through the polycarbonate panel (1). Install another washer over the screw threads on inside edge of windshield and fasten a nylon lock nut (11) to the threads. Torque to 5 Nm (Fig. 1)
5. Locate the clamp (4) to the slotted holes on the upper windscreen assy. The clamp should be oriented so that the clamp hinge is facing to the outside of the vehicle. (Fig 2)
6. Assemble a washer to an M6x16mm screw (10) and thread the screw through the outermost slot and into the clamp (4). Do not fully tighten the screw at this point. (Fig 1&2)
7. Assemble a washer (12) to an M6x35mm screw (8). Install the screw (8) through the holder (3) and into the clamp (4). (Fig 1&2)
8. Assemble a washer (12) to four M6x16mm screws (10) and thread a screw through each of the remaining four slots in the lower panel of the windscreen assembly (1) and into the clamp (4). Do not fully tighten the screws at this point.
9. Place a towel or protector on the hood.
10. Open the 4 Clamps (4) to the open configuration (Fig 3). Install the windscreen starting with the lower windscreen clamps (4) to the forward enclosure tubes with the bottom clamps near the bottom of the ROPS tubes (Fig 4). Do not fully close the clamps (4) yet.
11. Ensure that central lower edge of the screen is seated in the rain gutter between the hood and ROPS. (Fig 5)



12. Latch the 2 lower windshield clamps (4). If a clamp is too tight or too loose, open and rotate the latch handle cam until the clamp has proper tension when secured.
13. After the lower latches are secured flip the upper windshield to the closed position and latch the upper two clamps (4). Adjust the clamps to proper tension. A properly tensioned clamp should apply adequate clamping force while also remain capable of being released without rotating the cam.
14. Center the windscreen in the frame from side to side on the A-pillars.
15. Torque the 8 Button Head Screws (8)(10) securing the four clamps (4) to the Windscreen (1) to 5 Nm.
16. Ensure the sealing edge on the upper flange of the windshield sits flush against the plastic roof panel of the vehicle. Some adjustment of the windshield may be necessary.

Note: If the windscreen is positioned too low, the Edging will not compress between the windscreen and the roof leaving a gap. If the windscreen is positioned too high, it may inhibit the ability of the windscreens ability to fold.

17. On the front fenders, remove the third from front pre-existing M6 button head cap screw and nut (Fig 6). Removing this screw will reveal a hole which passes through bodywork and fender.
18. Insert an M6x40mm button head cap screw (7) into the holder (3) and place the assembly (7) through the hole in the fender (Fig 6).
19. On the backside of the fender, assemble a washer (12) and nylon lock nut (11) to the 40mm screw (7) and torque to 5Nm (Fig 6). Repeat process on opposite fender.
20. Undo the upper windscreen clamps and allow the upper windscreen to fold forward onto the hood.
21. Adhere the adhesive pad (6) to the flat surface of the rubber pad (5) (Fig 7).
22. Where the upper windscreen flange contacts the hood place the two pads (5) as close to the raised edges of the hood as possible. Ensure the upper windscreen flange and seal rest in the groove of the bumper when the screen is tilted out. (Fig 8).



CUSTOMER SERVICE:
For further information see your Yamaha dealer.

ESTIMATED TIME TO INSTALL: 0.5 HR

Note: If the pads are located too far inward, the plastic will not provide a rigid support for the windshield. Excessive noise & vibration may occur if not configured correctly.

USING THE WINDSCREEN:

⚠ WARNING

Both sides of windshield can get dirty quickly in dusty or muddy conditions. When operating in such conditions, carry fresh water and towels to clean the windshield if vision becomes impaired. Driving with impaired vision can result in an accident.

Lowering the Windscreen

Open the top clamps and lower the windscreen until its top edge rests on the pads (5). Put the clamps in the closed position. Undo and rotate the rubber latches and latch the hood down by stretching the rubber latches (2) over the fender mounted holders (3). (Fig 9)

NOTICE: The windshield can be damaged if it is left loose or if the clamps are left open during vehicle operation.

Raising the Windscreen

Undo the rubber latches (2) and fasten latch to the holder (3) mounted on the windshield. Open the clamps and raise the windscreen until the clamps rest against the vehicle enclosure tubes. Secure both upper clamps.

CAUTION:

Lower the windscreen to the folded position before towing. Ensure upper clamps are set back to the closed configuration for transport.

MAINTENANCE:

Periodically, check torque on all hardware. If loose hardware is found, re-torque to specification.

CARE AND CLEANING:

Clean the windshield with a clean soft cloth and mild soap and water solution. Rinse and dry. For additional cleaning, use Yamalube® Windshield & Visor Plastic Cleaner & Conditioner (ACC-PLASP-OL-11).

NOTICE:

- Avoid using alkaline or acid cleaner, gasoline, brake fluid, or any other solvent.
- Some cleaning compounds for plastics may leave scratches on surfaces of the windshield. Test by polishing an area which does not affect your visibility.